



www.vlieseline.com



EN / Brochure / 01/2024

The product brand marked © is a registered trademark of Carl Freudenberg KG in different countries.

DEALER STAMP



Freudenberg Performance Materials Apparel GmbH & Co. KG  
Vlieseline / 69465 Weinheim / Germany  
Tel. +49-6201-2721671 / info@vlieseline.com



# VLIESELINE® FULL PRODUCT RANGE BROCHURE

# THE PRODUCT RANGE

VLIESELINE® PRODUCT OVERVIEW

2

3



## RANGE OF INTERLININGS FOR APPAREL

3

H 180 / H 200 / G 405 / H 410 / F 220 / H 310 / G 700 / G 710 / G 740  
/ G 770 / G 785 / H 609 / L 11 / M 12 / S 13 / LE 420 / B 700 / B 710



## TAPES

14

WAIST-SHAPER / BIAS TAPE / FRAMILASTIC / EDGE TAPE / EDGEFIX  
/ SEAM TAPE FLEXIBLE / PERFECT HEM / WUNDAWEB® / STRETCHFIX TAPE  
/ BONDAWEB® TAPE



## CREATIVE RANGE

21

QUILTER'S GRID / QUICKSCREEN SQUARE / QUICKSCREEN TRIANGLE  
/ LAMIFIX / S 80 / S 320 / S 530 / S 133 / DECOVIL I, DECOVIL I LIGHT  
/ STYLE-VIL / STYLE-VIL FIX / STITCH-N-TEAR / FUSE-N-TEAR  
/ FILMOPLAST H 54 / SOLUFLEECE / SOLUFIX / H 250 / STRETCHFIX  
/ BONDAWEB® / DECO-WADDING



## WADDING RANGE

34

249 / 266 WOOL MIX 70/30 / 268 BAMBOO MIX 50/50  
/ 272 THERMOLAM / 276 NATURAL COTTON WHITE / 277 COTTON  
/ 278 SOYA MIX / 279 COTTON MIX 80/20 / 280, 281 / 295 / P 120  
/ P 140 / P 250 / R 80 / R 200 / H 630 / H 640



## SPECIAL PRODUCTS

43

IRON CLEANER / EMBROIDERY SET / IRON ON PRESSING CLOTH



## VLIESELINE®-WORLD

46

VLIESELINE® BASICS: THE PROCESSING OF OUR PRODUCTS / VLIESELINE®  
BASICS: WHERE IS VLIESELINE® USED?



## RANGE OF INTERLININGS FOR APPAREL

### IRON-ON INTERLININGS:

H 180 / H 200 / G 405 / H 410 / F 220 / H 310 / G 700 / G 710 / G 740 / G 770 / G 785  
/ H 609 / LE 420 / B 700 / B 710

### SEW-IN INTERLININGS:

L 11 / M 12 / S 13

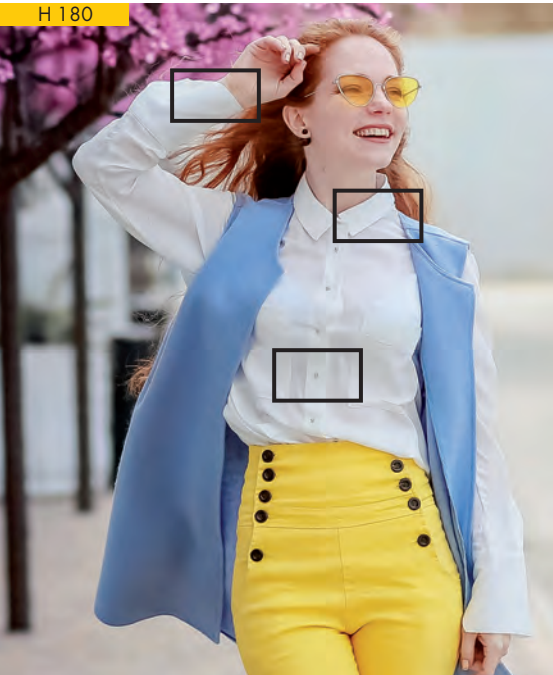


# RANGE OF INTERLININGS FOR APPAREL

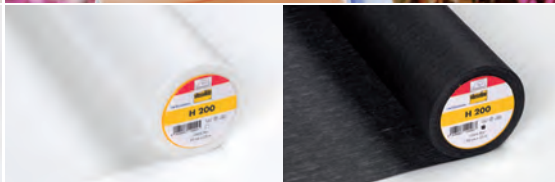
H 180 / H 200

4

H 180



H 200



H 180

□ ■ / 85% PA, 15% R-PES / 37 g/m<sup>2</sup> / 90 cm x 25 m

PROPERTIES:

Lightweight, soft and fine fusible nonwoven interlining made from synthetic fibres.

APPLICATION:

For the fusing of small parts on blouses and shirts and of front parts.  
Suitable for lightweight fabrics.

PROCESSING:

Gently glide the iron for 12 seconds using medium pressure.



H 200

□ ■ / 100% PES / 45 g/m<sup>2</sup> / 90 cm x 25 m

PROPERTIES:

Lightweight fusible nonwoven interlining made from synthetic fibres.

APPLICATION:

For the fusing of small parts such as collars and cuffs on blouses and shirts.  
Suitable for lightweight fabrics.

PROCESSING:

Gently glide the iron for 12 seconds using medium pressure.



# RANGE OF INTERLININGS FOR APPAREL

G 405 / H 410

5

G 405



H 410



G 405

□ ■ / 65% PA, 35% R-PES / 44 g/m<sup>2</sup> / 90 cm x 25 m

PROPERTIES:

Mediumweight, soft, fusible and versatile nonwoven interlining made from synthetic fibres.

APPLICATION:

For the fusing of small parts of clothing and front parts of jackets and coats.  
Suitable for light- to mediumweight fabrics.

PROCESSING:

Press the iron on step by step for about 12 seconds, using a damp cloth. Do not push.



H 410

□ ■ / 100% PA / 43 g/m<sup>2</sup> / 90 cm x 25 m

PROPERTIES:

Mediumweight, soft fusible nonwoven interlining made from synthetic fibres, with stabilising vertical threads preventing distortion of outer fabrics.

APPLICATION:

For the fusing of front parts on coats and longer jackets and small parts susceptible to distortion.  
Suitable for light- to mediumweight fabrics.

PROCESSING:

Press the iron on step by step for about 12 seconds, using a damp cloth. Do not push.





# RANGE OF INTERLININGS FOR APPAREL

F 220 / H 310

6

F 220



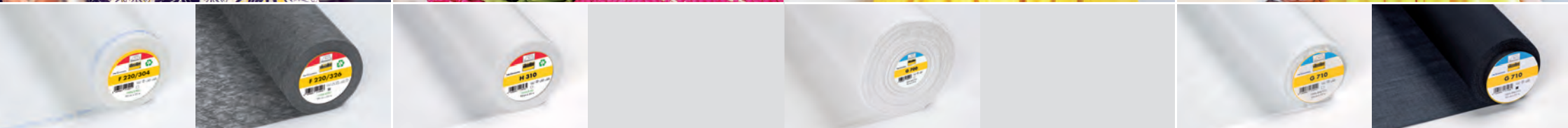
H 310



G 700



G 710



F 220

□ ■ / 100% R-PES / 43 g/m<sup>2</sup> / 90 cm x 25 m

PROPERTIES:

Lightweight fusible nonwoven interlining made from synthetic fibres.

APPLICATION:

For the fusing of small parts of clothing, handicrafts and needlework.  
Suitable for lightweight fabrics for dresses.

PROCESSING:

Press the iron on step by step for about 12 seconds, using a damp cloth. Do not push.



12 s -

H 310

□ / 100% R-PES / 63 g/m<sup>2</sup> / 90 cm x 25 m

PROPERTIES:

Mediumweight, stable fusible nonwoven interlining made from synthetic fibres.

APPLICATION:

For the fusing of small parts such as bonnets, trims, collars, waistbands and bows as well as for tiebacks and trims on Roman blinds, pelmets and pillows.  
Suitable for medium- to heavyweight fabrics.

PROCESSING:

Press the iron on step by step for about 12 seconds, using a damp cloth. Do not push.



12 s -

# RANGE OF INTERLININGS FOR APPAREL

G 700 / G 710

7

G 700

□ ■ / 100% CO / 90 g/m<sup>2</sup> / 90 cm x 25 m

PROPERTIES:

Heavyweight fusible woven interlining 100% cotton base.

APPLICATION:

For the fusing of small parts such as collars and cuffs on blouses and shirts.  
Suitable for light- to mediumweight fabrics.

PROCESSING:

Press the iron on step by step for about 12 seconds, using a damp cloth. Do not push.

12 s

G 710

□ ■ / 100% CO / 55 g/m<sup>2</sup> / 90 cm x 25 m

PROPERTIES:

Mediumweight fusible woven interlining 100% cotton base.

APPLICATION:

For the fusing of small parts such as collars and cuffs on blouses, dresses and shirts.  
Suitable for light- to mediumweight fabrics.

PROCESSING:

Press the iron on step by step for about 12 seconds, using a damp cloth. Do not push.

12 s



# RANGE OF INTERLININGS FOR APPAREL

G 740 / G 770

8

G 740



G 770



G 740

ecru / 100% CO / 75 g/m<sup>2</sup> / 90 cm x 25 m

PROPERTIES:

Mediumweight, slightly textured fusible woven interlining made from cotton fibres.

APPLICATION:

For the fusing of small parts and front parts of jackets and coats.  
Suitable for medium- to heavyweight fabrics.

PROCESSING:

Press the iron on step by step for about 12 seconds, using a damp cloth. Do not push.



G 770

ecru / 100% PES / 70 g/m<sup>2</sup> / 75 cm x 25 m

PROPERTIES:

Mediumweight fusible woven interlining made from synthetic fibres. The bulky yarn gives it a very soft surface.

APPLICATION:

For the fusing of small parts and front parts of men's jackets, blazers and jackets as well as trouser or skirt waistbands.  
Suitable for medium- to heavyweight and sensitive fabrics.

PROCESSING:

Gently glide the iron for 8 seconds using medium pressure.



# RANGE OF INTERLININGS FOR APPAREL

G 785 / H 609

9

G 785



H 609



G 785

off-white / rosso beige / 100% PES / 30 g/m<sup>2</sup> / 90 cm x 25 m

PROPERTIES:

Lightweight, very fine fusible woven interlining made from synthetic fibres.

APPLICATION:

For the fusing of small parts in blouses and dresses and front parts of elastic jackets.  
Suitable for lightweight, transparent and sensitive fabrics.

PROCESSING:

Press the iron on step by step for about 15 seconds, using a damp cloth. Do not push.



H 609

/ 100% PA / 41 g/m<sup>2</sup> / 75 cm x 25 m

PROPERTIES:

Lightweight, soft and fusible weft interlining made from synthetic fibres.

APPLICATION:

For the fusing of small parts and front parts in clothing made from high-quality and highly elastic outer fabrics such as jersey.  
Suitable for light- to mediumweight elastic fabrics.

PROCESSING:

Press the iron on step by step for about 8 seconds. Do not push.





# RANGE OF INTERLININGS FOR APPAREL

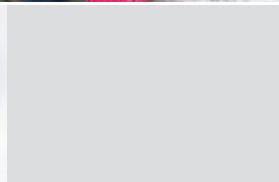
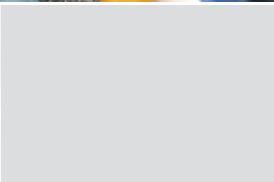
L 11 / M 12

10

L 11



M 12



L 11

PROPERTIES:

APPLICATION:

PROCESSING:



□ / 55% CV, 35% R-PES, 10% PES / 32 g/m<sup>2</sup> / 90 cm x 25 m

Lightweight, soft sew-in nonwoven interlining made from a blend of synthetic fibres.

For the fusing of small parts and front parts in blouses and dresses and for handicrafts. Suitable for lightweight fabrics such as crushed and pleated fabrics which are heat sensitive and unable to be ironed.

Sew by hand or with a sewing machine.  
Quilt spacing: 15 cm



M 12

PROPERTIES:

APPLICATION:

PROCESSING:



□ / 65% R-PES, 35% CV / 70 g/m<sup>2</sup> / 90 cm x 25 m

Mediumweight, soft sew-in nonwoven interlining made from a blend of synthetic fibres.

For the fusing of small parts and front parts in dresses and jackets and for handicrafts. Suitable for light- to mediumweight fabrics such as crushed and pleated fabrics which are heat sensitive and unable to be ironed.

Sew by hand or with a sewing machine.  
Quilt spacing: 15 cm



# RANGE OF INTERLININGS FOR APPAREL

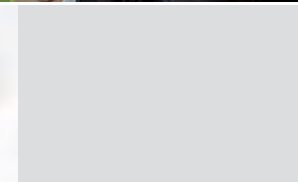
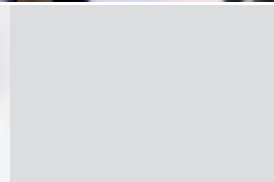
S 13 / LE 420

11

S 13



LE 420



S 13

PROPERTIES:

APPLICATION:

PROCESSING:



□ / 65% R-PES, 35% CV / 90 g/m<sup>2</sup> / 90 cm x 25 m

Heavyweight, soft sew-in nonwoven interlining made from a blend of synthetic fibres.

For the fusing of small parts and front parts in jackets and for handicrafts. Suitable for heavyweight fabrics which are heat sensitive and unable to be ironed.

Sew by hand or with a sewing machine.  
Quilt spacing: 15 cm



LE 420

PROPERTIES:

APPLICATION:

PROCESSING:

merino / 100% PES / 39 g/m<sup>2</sup> / 90 cm x 25 m

Lightweight, soft, fusible non-woven interlining of synthetic fibres with low melt adhesive.

Small articles and front fusings on jackets, coats and other garments. Nappa and velour leather, fur, imitation leather and fur as well as heat-sensitive materials.

Press down the iron for about 10 seconds, section by section. Dry iron. Press the iron step by step.





# RANGE OF INTERLININGS FOR APPAREL

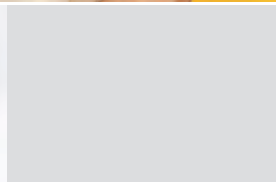
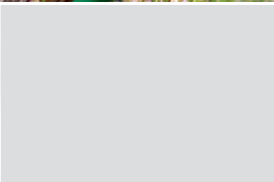
B 700 / B 710

12

B 700



B 710



B 700

**PROPERTIES:** Heavy, fusible woven interlining of pure cotton with biodegradable adhesive.  
**APPLICATION:** Small articles, such as collars and cuffs, on blouses and shirts. Light to medium-weight fabrics.

**PROCESSING:** Press the iron for approximately 15 seconds, section by section, with a damp cloth. Do not push the iron.



15 s - (P)

B 710

**PROPERTIES:** Medium-weight, fusible woven interlining of pure cotton with biodegradable adhesive.  
**APPLICATION:** Small articles, such as collars and cuffs, on blouses and shirts. Light to medium-weight fabrics.

**PROCESSING:** Press the iron for approximately 15 seconds, section by section, with a damp cloth. Do not push the iron.



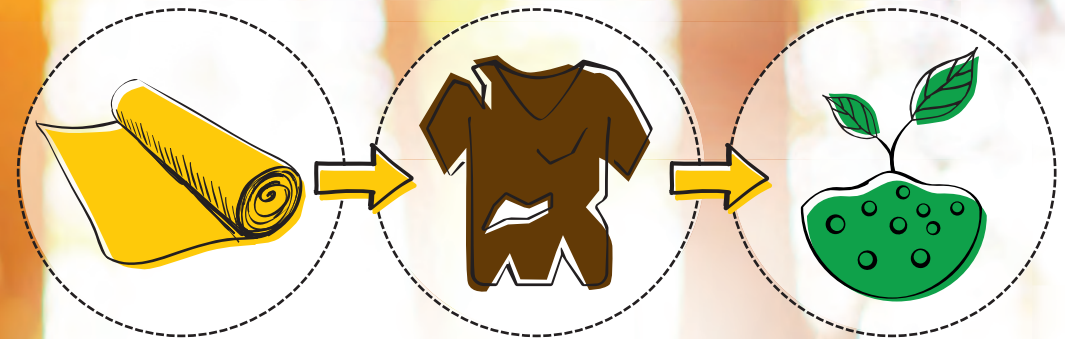
15 s - (P)



13

## BIODEGRADABLE VLIESELINE® PRODUCTS

B 700 and B 710 are biodegradable woven interlinings with a unique **adhesive made from natural resources**. The special composition ensures that the material will decompose when the garments reach the end of their useful lives, making it an environmentally friendly solution that will not harm our planet.



Our approach to sustainability with Vlieseline® is twofold:  
 We want to **lower our own footprint** and **increase our handprint for our customers and end users**.

With our biodegradable technology we aim to support customers efforts to achieve greater sustainability and to ensure minimum waste impact to the environment.





## TAPES

WAIST-SHAPER / BIAS TAPE / FRAMILASTIC / EDGE TAPE / EDGEFIX / SEAM TAPE FLEXIBLE  
/ PERFECT HEM / WUNDAWEB® / STRETCHFIX TAPE / VLIESOFIX® TAPE

# TAPES

WAIST-SHAPER / BIAS TAPE

BIAS TAPE



BUNDFIX  
WAIST-SHAPER

□ ■ / 60% PES, 40% Cellulose / 90 g/m<sup>2</sup> / GP 3: 70 mm (10-25-25-10 mm) x 50 m,  
GP 5: 80 mm (10-30-30-10 mm) x 50 m / SB: 70 mm (10-25-25-10 mm) x 3 m

PROPERTIES:

Heavyweight fusible tape made from a blend of synthetic fibres with perforated lines that serve as a guideline while sewing and define a fold.

APPLICATION:

For the accurate processing of skirt and trouser waistbands without chalking and marking.  
Suitable for medium- to heavyweight fabrics.

PROCESSING:

1. Iron Waist-Shaper onto the fabric waistband cut to size, 8 sec.
2. Fold the waistband over in the middle and pre-iron the upper waistband edge.
3. Stitch waistband along the perforated line.
4. Sew and turn over the joining edge and then attach to the waistband.
5. Stitch the hemmed waistband to the seam on the right side.

8 s      

FORMBAND  
BIAS TAPE

□ ■ / 83% PA, 17% PES / 54 g/m<sup>2</sup> / GP: 12 mm x 100 m / SB: 12 mm x 5 m

PROPERTIES:

Mediumweight, bias-cut fusible tape made from synthetic fibres and with a reinforcement stitch.  
Securing of bias-cut or round edges.  
Suitable across a wide range of fabrics.

PROCESSING:

1. The bias tape is 12 mm wide and stitched with a row of chain stitches at a distance of 4/8 mm from the edge. For fusing place the 8 mm side of the tape to the fabric edge and then stitch immediately behind the row of chain stitching.
2. Press on the iron step by step for about 8 seconds. Do not push.

8 s      



# TAPES

FRAMILASTIC / EDGE TAPE

16

## FRAMILASTIC



## FRAMILASTIC

□ transparent / 100% PU / 160 g/m<sup>2</sup> / GP: 6 mm x 150 m, 9 mm x 150 m  
/ SB: 6 mm x 5 m, 9 mm x 5 m

### PROPERTIES:

Sew-in tape of a very high and permanent elasticity. Chlorine-resistant.

### APPLICATION:

For the securing of elastic seams, e.g. shoulder seams of ladies' wear, lingerie, swimwear and sportswear and also for creative accents such as gathers, ripples and ruffles. Suitable for all fabrics and transparent fabrics.

### PROCESSING:

1. Cut Framilastic to size, but shorter than the length of fabric to sew and depending on the amount of gathering you require.
2. Sew on the tape smoothly at the beginning of the fabric to be gathered at a length of approx. 1 cm. Then stretch your tape to the desired length and sew it on while stretched.



## KANTENBAND EDGE TAPE

□ ■ / 77% PA, 23% PES / 43 g/m<sup>2</sup> / GP: 20 mm x 100 m / SB: 20 mm x 5 m

### PROPERTIES:

Lightweight fusible tape made from synthetic fibres, with stabilising vertical threads.

### APPLICATION:

For the stabilising of straight edges of e.g. shoulders, facings etc. on blazers, jackets and coats. Suitable for all fabrics.

### PROCESSING:

Place the Edge Tape on the edge in the desired shape and iron it on for about 8 seconds, applying slight pressure. For round edges, tuck the tape into small pleats and iron it into the required shape. Do not cut into the tape as this will sever the stabilising vertical threads.



# TAPES

EDGEFIX / SEAM TAPE FLEXIBLE

17

## EDGEFIX



## KANTENFIX

## EDGEFIX

### PROPERTIES:

### APPLICATION:

### PROCESSING:

□ ■ / 50% CV, 50% PES / 46 g/m<sup>2</sup> / GP 1: 50 mm (10-40 mm) x 50 m

Lightweight fusible tape made from a blend of synthetic fibres with a perforated line.

For the accurate processing of button plackets, cuffs, slits, pockets and pocket flaps; may also be used for hems on jackets and coats. Suitable for all fabrics.

Press the iron on step by step for about 8 seconds, using a damp cloth. Do not push.



## NAHTBAND FLEXIBEL

## SEAM TAPE FLEXIBLE

□ ■ / 100% PES / 40 g/m<sup>2</sup> / GP: 15 mm x 50 m / SB: 15 mm x 5 m

### PROPERTIES:

### APPLICATION:

### PROCESSING:

Lightweight, bi-elastic, fusible woven tape.

Perfect seams in soft, elastic fabrics (e.g. jersey), prevents warping and fraying. Easy to apply to curved shapes. Suitable for light- to mediumweight elastic fabrics.

Put it into the desired shape step by step and press on the iron for about 8 seconds. Do not push.



# TAPES

PERFECT HEM

18



PERFECT HEM



## PERFEKT SAUM

### PERFECT HEM

#### PROPERTIES:

Two lightweight fusible woven tapes made from synthetic fibres with adhesive side facing out. The tapes are joined by a row of blind stitching.

#### APPLICATION:

For soft, invisible hems on blouses, dresses, skirts, jackets and coats, i.e. hems no longer need to be stitched. Suitable for all fabrics.

#### PROCESSING:

1. Neaten the edge of the hem, fold the hem over (at least 4 cm) and iron, open the hem again and insert Perfect Hem with the narrow side facing up, the visible blind stitch facing towards the hem side and the invisible side on the outside.
2. Iron for about 10 seconds, using a damp cloth. Should the hem edge show through, this can be corrected by ironing beneath the upper hem edge with the tip of the iron.

10 s - (P)

# TAPES

WUNDAWEB® / STRETCHFIX TAPE

19



WUNDAWEB®



STRETCHFIX TAPE

STRETCHFIX, PAGE 32



## SAUMFIX

### WUNDAWEB®

#### PROPERTIES:

transparent / 100% PA / 25 g/m² / GP: 30 mm x 100 m / SB: 30 mm x 5 m

#### APPLICATION:

Iron-on tape with adhesive and without transfer paper. For joining layers of fabric, e.g. the fast and easy production of hems by ironing. Fast and easy securing of hems by ironing, sewing is no longer required. Suitable for all fabrics.

#### PROCESSING:

1. Neaten the edge of the hem, fold the hem over and iron. Insert Wundaweb® into the hem.
2. Press the iron on step by step for about 10 seconds using a damp cloth. Do not push.

10 s - (P)

## STRETCHFIX BAND

### STRETCHFIX TAPE

#### PROPERTIES:

transparent / 100% PU / 20 g/m² + transfer paper / SB: 30 mm x 5 m

#### APPLICATION:

Elastic, heat activated adhesive web on transfer paper. Soft hem construction in garments made from stretch fabric. Maintains the elasticity of the fabric. Suitable for light- to mediumweight elastic fabrics.

#### PROCESSING:

1. Iron Stretchfix T30 along the edge with a dry iron and using a setting of 2-3 dots for 10 to 12 seconds. Then fold the hem tape width and iron (before removing the paper). This allows you to easily define the hem width and fold without the necessity of measuring.
2. Then allow the paper to cool down completely and peel it off. Fold the hem upwards, cover it with a damp cloth and press on the iron (setting: 2-3 dots) for about 10 to 12 seconds step by step. Do not push.

10-12 s - (P)



# TAPES

BONDAWEB® TAPE

20

BONDAWEB® TAPE  
BONDAWEB®, PAGE 33



VLIESOFIX® BAND  
BONDAWEB® TAPE

☐ transparent / 100% PA / 28 g/m<sup>2</sup> + transfer paper / SB: 6 mm x 5 m, 10 mm x 5 m, 25 mm x 5 m

PROPERTIES: Iron-on tape with adhesive on transfer paper.

APPLICATION: For ironing onto bias-cuts fabric strips used for Tiffany patchwork, braid patchwork, belt loops, for the processing of hems and lots more. Suitable for all fabrics.

PROCESSING:

1. Place Bondaweb® with rough side facing the wrong side of the fabric, iron on dry for about 5 seconds and allow to cool down.
2. Peel off the carrier paper and fold the fabric over.
3. To join the fabrics, press the iron on step by step for about 10 seconds, using a damp cloth. Do not push. Sew the tape over with a zig-zag stitch and place Stitch-N-Tear embroidery backing underneath it, if necessary.

10 s -

vlieseline®

21



## CREATIVE RANGE

QUILTER'S GRID / QUICKSCREEN SQUARE / QUICKSCREEN TRIANGLE / LAMIFIX / S 80 / S 320  
/ S 530 / S 133 / DECOVIL I, DECOVIL I LIGHT / STYLE-VIL / STYLE-VIL FIX / STITCH-N-TEAR  
/ FUSE-N-TEAR / FILMOPLAST H 54 / SOLUFLEECE / SOLUFIX / H 250 / STRETCHFIX / BONDAWEB®  
/ DECO-WADDING





QUILTER'S GRID



## QUILTER'S GRID

□ / 100% PES / 34 g/m<sup>2</sup> / 90 cm x 15 m

### PROPERTIES:

Lightweight fusible patchwork nonwoven made from synthetic fibres with a printed-on brown grid.

### APPLICATION:

For water-colour quilts with accurate and precisely matching squares. Suitable for all fabrics.

### PROCESSING:

1. Cut the fabrics into squares using a rotary cutter. Arrange the squares in a grid as desired on Quilter's Grid (with the coated side facing up) and iron them on for about 10-12 sec.
2. Fold over the fabric thus prepared in vertical rows – right side in – and sew at presser-foot width.
3. Fold your work over in horizontal rows and cut in the vertical seam allowances up to close to the seam. Lay the allowances alternatingly to the left and right.
4. Iron your work with a steam iron and complete the quilt as usual.

10-12 s     



QUICKSCREEN SQUARE



## RASTERQUICK VIERECK QUICKSCREEN SQUARE

□ / 60% PES, 20% Cellulose, 20% CV / 50 g/m<sup>2</sup> / 90 cm x 30 m

### PROPERTIES:

Mediumweight nonwoven interlining for patchwork, made from a blend of synthetic fibres; with printed-on blue grid in a 90° angle.

### APPLICATION:

Suitable for patchwork; allowing the accurate processing and precise fit of fabric strips. Suitable for all fabrics.

### PROCESSING:

1. Cut one square of fabric, some fabric strips of various lengths and a piece of Quickscreen Square to the desired size. Place the fabric square with its right side facing up in the centre of the blank side of Quickscreen Square. Place the first fabric strip on the fabric square, right sides together, and secure both pieces of fabric with pins at both ends of the fabric strip.
2. Turn your work over and sew it together along the fabric square using the printed line as a guide (observe the seam allowance).
3. Turn your work over again and cut off the fabric strip along the side of the square.
4. Work the complete Quickscreen Square piece in this manner.



# CREATIVE RANGE

QUICKSCREEN TRIANGLE

24



QUICKSCREEN TRIANGLE



## RASTERQUICK DREIECK

### QUICKSCREEN TRIANGLE

#### PROPERTIES:

□ / 60% PES, 20% Cellulose, 20% CV / 50 g/m<sup>2</sup> / 90 cm x 15 m

Mediumweight nonwoven interlining for patchwork, made from a blend of synthetic fibres; with printed-on blue grid in a 60° angle.

#### APPLICATION:

Suitable for patchwork; allowing the accurate processing and precise fit of fabric strips. Suitable for all fabrics.

#### PROCESSING:

1. Cut out one diamond of fabric, fabric strips of different sizes and six diamonds of Quickscreen Triangle. Place the fabric diamond on the 60° edge of the blank side of the Quickscreen Triangle diamond. Use the broken lines as guides.
2. Place the first fabric strip on the diamond, right sides together, and secure both fabric pieces with pins.
3. Turn your work over and sew along the fabric diamond on the solid printed line.
4. Turn your work again and fold the fabric strip over. Then cut off overlapping strip material along the diamond and iron. Complete the diamond following the steps described above.



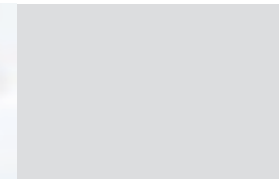
# CREATIVE RANGE

LAMIFIX / S 80

25



LAMIFIX



S 80



## LAMIFIX

#### PROPERTIES:

□ transparent / 100% PES film / 93 g/m<sup>2</sup> / 45 cm x 15 m

Glossy, wipeable, fusible film.

#### APPLICATION:

For use on flat pieces of work such as place mats and other pieces of handicraft to make them splash proof and easy to wipe clean. Suitable for wide range of fabrics.

#### PROCESSING:

1. Place Lamifix with the glossy side facing up on the right side of the fabric.
2. Iron it lightly on first, using a dry cloth, then cut it out to exact measurements.
3. Press the iron on step by step for about 8 seconds. Do not push.

IMPORTANT: Should your work become dirty, only wipe it with a damp cloth. Do not wash!



## S 80

#### PROPERTIES:

□ / 60% PES, 40% Cellulose / 160 g/m<sup>2</sup> / 30 cm x 25 m, 90 cm x 25 m

Mediumweight, stable, sew-in interlining made from synthetic fibres.

#### APPLICATION:

For postcards and greeting cards and other creative work. Suitable for wide range of fabrics.

#### PROCESSING:

Sew in by hand or with the sewing machine.

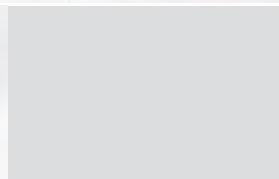
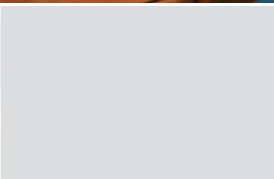


# CREATIVE RANGE

S 320 / S 530

26

S 320



S 320

□ / 100% PES / 115 g/m<sup>2</sup> / 30 cm x 25 m, 45 cm x 25 m, 90 cm x 25 m

PROPERTIES:

Lightweight fusible pelmet interlining made from synthetic fibres.

APPLICATION:

For fabric baskets, bags, belts, hats and other creative handicrafts.  
Suitable for wide range of fabrics.

PROCESSING:

Press on the iron step by step for about 15 seconds, using a damp cloth. Do not push.

15 s -

S 530

□ / 60% PES, 40% Cellulose / 158 g/m<sup>2</sup> / 30 cm x 30 m, 45 cm x 30 m, 90 cm x 30 m

PROPERTIES:

Mediumweight, stable fusible pelmet interlining made from synthetic fibres.

APPLICATION:

For fabric baskets, bags, belts, hats and other creative handicrafts.  
Suitable for wide range of fabrics.

PROCESSING:

Press on the iron step by step for about 15 seconds, using a damp cloth. Do not push.

15 s -

# CREATIVE RANGE

S 133 / DECOVIL I, DECOVIL I LIGHT

27

S 133



S 133

■ ecru / 60% PES, 40% Cellulose / 520 g/m<sup>2</sup> / 45 cm x 25 m

PROPERTIES:

Heavyweight, very stable and compact fusible pelmet interlining made from synthetic fibres.

APPLICATION:

For fabric bowls, peaks of caps, bottoms of bags and other creative work.  
Suitable for wide range of fabrics.

PROCESSING:

Press on the iron step by step for about 15 seconds, using a damp cloth. Do not push.

15 s -

DECOVIL I

DECOVIL I LIGHT

■ beige / 45% Cellulose, 30% PES, 25% PA / DECOVIL I: 400 g/m<sup>2</sup> / DECOVIL I LIGHT: 240 g/m<sup>2</sup> / 90 cm x 15 m / DECOVIL I LIGHT, SB: 90 cm x 1 m

PROPERTIES:

DECOVIL I: Heavyweight, dimensionally stable and resilient iron-on interlining with a leather-like handle.

DECOVIL I LIGHT: Lighterweight, dimensionally stable and resilient iron-on interlining with a leather-like handle.

APPLICATION:

For creative work such as bags, hats, belts etc. and for interior design.  
Suitable for cotton, decorative and synthetic fabrics.

PROCESSING:

Press the iron on step by step for about 6 seconds, using a damp cloth. Do not push.

6 s



# CREATIVE RANGE

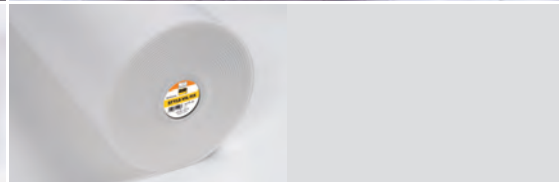
STYLE-VIL / STYLE-VIL FIX

28

## STYLE-VIL



## STYLE-VIL FIX



## STYLE-VIL

□ / 53% PES, 47% PU / 220 g/m<sup>2</sup> / 72 cm x 15 m / SB: 72 cm x 1 m

### PROPERTIES:

Voluminous, sew-in foamed material laminated with wefts on both sides, made from synthetic materials and featuring high abrasion resistance.

### APPLICATION:

For creative needlework with three-dimensional effects, such as handbags, mobile phone pouches, eyeglass cases and for stabilising pieces of clothing, such as caps, hats and shoulder pads.  
Suitable for all fabrics.

### PROCESSING:

Sew in by hand or with the sewing machine.



## STYLE-VIL FIX

□ / 53% PES, 47% PU / 235 g/m<sup>2</sup> / 72 cm x 15 m

### PROPERTIES:

Voluminous fusible foamed interlining laminated with wefts on both sides and made from synthetic materials with high abrasion resistance.

### APPLICATION:

For creative needlework with three-dimensional effects; for the padding of protective pouches for mobile phones and glasses as well as for the stabilisation of bags, garments (e.g. shoulder pads), caps, hats, etc.  
Suitable for all fabrics.

### PROCESSING:

Press on the iron step by step for about 12 seconds, using a damp cloth. Do not push.



# CREATIVE RANGE

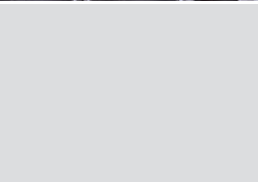
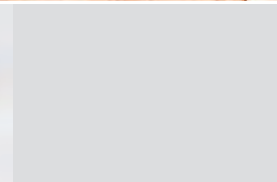
STITCH-N-TEAR / FUSE-N-TEAR

29

## STITCH-N-TEAR



## FUSE-N-TEAR



## STICKVLIES

## STITCH-N-TEAR

### PROPERTIES:

### APPLICATION:

### PROCESSING:

□ / 70% CV, 30% Cellulose / 40 g/m<sup>2</sup> / 90 cm x 25 m

Sew-in, tear-off embroidery backing.

Backing for embroidery and applique, sewing aid for the individual design and production of patchwork patterns and stitching work and for the transfer of motifs to the right side of fabrics. Suitable for all fabrics. Also suitable to use with embroidery hoop.

1. Tack a piece of Stitch-N-Tear that is a bit larger than your motif under the fabric.
2. Embroider the desired motif.
3. Then simply tear off the Stitch-N-Tear.



## FIXIER-STICKVLIES

## FUSE-N-TEAR

### PROPERTIES:

### APPLICATION:

### PROCESSING:

□ / 80% Cellulose, 20% PES / 48 g/m<sup>2</sup> / 90 cm x 25 m

Temporary iron-on, tear-off embroidery backing.

For stabilising the fabric to ensure perfect and non-puckering embroidery design; can be used as a template for creative work and for embroidery and appliques on elastic fabrics. Interlining can be printed with an ink-jet printer. Suitable for all fabrics, especially elastic outer fabrics.

### FREEHAND EMBROIDERY AND THREAD PAINTING:

Iron on Fuse-N-Tear, 8 sec., embroider your motif, then tear off the backing.

### SEWING AID FOR PATCHWORKING, STITCHING AND QUILTING:

Draw your motifs on the embroidery backing and iron it onto the right side of your piece of work. Sew the motif and then tear off the embroidery backing.

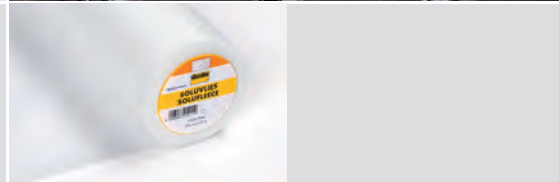


# CREATIVE RANGE

FILMOPLAST H 54 / SOLUFLEECE

30

FILMOPLAST H 54



FILMOPLAST H 54

□ / 70% CV, 30% Cellulose / 25 g/m<sup>2</sup> + paper / 54,5 cm x 15 m

PROPERTIES:

Self-adhesive, tear-off embroidery backing with a grid printed on transfer paper.

APPLICATION:

For mounting and embroidering small parts in an embroidery hoop, for machine embroidery, for framing embroidered pictures and for making collages.  
Suitable for all fabrics.

PROCESSING:

1. Mount H 54 into the embroidery hoop with the masking paper facing up. Carefully score the masking paper with a needle without damaging the backing. Remove the part scored.
2. Position the fabric, smooth it and embroider.
3. Tear off Filmoplast H 54 on the back.



SOLUVLIES

SOLUFLEECE

□ / 100% PVAL / 38 g/m<sup>2</sup> / 90 cm x 25 m

PROPERTIES:

Sew-in and water-soluble embroidery backing.

APPLICATION:

For all kinds of machine embroidery, new creative techniques and as an ideal sewing aid for mini-quilts.  
Suitable for all fabrics and textile materials that are washable and sew-in.

PROCESSING:

1. Place Solufleece under the fabric and mount the fabric with Solufleece in an embroidery hoop.
  2. Embroider the desired motif.
  3. After completing your embroidery work, simply wash out the Solufleece.
- IMPORTANT: Do not iron or tear off!

# CREATIVE RANGE

SOLUFIX / H 250

31

SOLUFIX



SOLUFIX

□ / 100% PVAL / 67 g/m<sup>2</sup> + paper / 45 cm x 25 m / SB: 10x A4 (210 mm x 297 mm)

PROPERTIES:

Self-adhesive and water-soluble embroidery backing on transfer paper.

APPLICATION:

For all kinds of machine embroidery, new creative techniques and as an ideal sewing aid for mini-quilts.  
Suitable for all fabrics and textile materials that are washable and sew-in; especially suitable for elastic fabrics.

PROCESSING:

1. Draw the desired motif on the rough side of Solufix and peel off the transfer paper.
2. Place the piece of Solufix on the right side of the handicraft and press it on.
3. Place embroidery backing under the wrong side of the handicraft and sew along the motif with a narrow zig-zag stitch.

H 250

□ / 60% PES, 40% Cellulose / 62 g/m<sup>2</sup> / 90 cm x 25 m / SB: 90 cm x 1 m

PROPERTIES:

Mediumweight, stable fusible nonwoven interlining made from a blend of synthetic fibres. Fully coated surface for firmer handle.

APPLICATION:

For the fusing of shaped waistbands and belts and for various handicrafts.  
Suitable for medium- to heavyweight fabrics for dresses.

PROCESSING:

Gently glide the iron for 8 seconds using medium pressure.





# CREATIVE RANGE

STRETCHFIX

32



STRETCHFIX  
STRETCHFIX TAPE, PAGE 19



## STRETCHFIX

□ transparent / 100% PU / 20 g/m<sup>2</sup> + transfer paper / SB: 30 cm x 5 m

### PROPERTIES:

Elastic, heat activated adhesive web on transfer paper.

### APPLICATION:

For applique on textiles or for joining two different fabrics. Maintains the elasticity of the fabric.

Suitable for light- to mediumweight elastic fabrics.

### PROCESSING:

#### APPLIQUÉ ON ELASTIC OUTER FABRICS:

1. Trace or draw the motif mirror-image on the paper side of Stretchfix and roughly cut it out. Place it on the wrong side of the fabric with the rough side facing down, iron it on with a dry iron and a setting of 2-3 dots for about 10-12 seconds. Allow the paper to cool down completely.
2. Accurately cut out the motif and peel off the transfer paper. Then put the motif with the coated side facing down on the selected place of the outer fabric.
3. Cover with a damp cloth and iron the motif on step by step, for 10-12 seconds and with an iron setting of 2-3 dots. Sew around the appliqué with the desired stitch.

10-12 s -

33

# CREATIVE RANGE

BONDAWEB® / DECO-WADDING



BONDAWEB®  
BONDAWEB® TAPE, PAGE 20



DECO-WADDING



## VLIESOFIX®

## BONDAWEB®

□ transparent / 100% PA / 28 g/m<sup>2</sup> + transfer paper / 45 cm x 30 m (Display), 90 cm x 30 m / SB: 30 cm x 5 m, 90 cm x 1 m

### PROPERTIES:

Iron-on adhesive on transfer paper.

### APPLICATION:

For joining fabric layers e.g. for applique, handicrafts or repair work. Suitable for all fabrics, raffia, cardboard, wood and, at low temperatures, also for leather.

### PROCESSING:

1. Take a reversed tracing or drawing of your motif on the paper side of the Bondaweb® and cut it out roughly.
2. Place the Bondaweb® with the rough side on the wrong side of the fabric and iron it on for about 5-10 seconds.
3. Precisely cut out the motif and peel off the transfer paper.
4. Then place it, coated side facing down, on the selected part of another fabric. Cover with a damp cloth and iron on step by step for about 10 seconds.
5. Stitch along the edges of your appliqué with a zig-zag stitch; place embroidery backing underneath it, if necessary.

10 s -

## DEKOWATTE

## DECO-WADDING

□ / 100% PES / SB: 300 g, 1 kg

### PROPERTIES:

Wadding made from very soft, bulky and highly care-resistant synthetic fibres.

### APPLICATION:

For all kinds of creative ideas where three-dimensional effects are required such as pillows, dolls, soft toys, teddy bears, decorations etc.







## WADDING RANGE

### SEW-IN INTERLININGS:

249 / 266 WOOL MIX 70/30 / 268 BAMBOO MIX 50/50 / 272 THERMOLAM  
/ 276 NATURAL COTTON WHITE / 277 COTTON / 278 SOYA MIX / 279 COTTON MIX 80/20  
/ 280, 281 / 295 / P 120 / P 140 / P 250 / R 80 / R 200

### IRON-ON INTERLININGS:

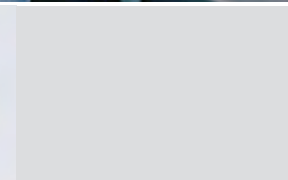
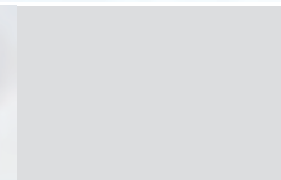
H 630 / H 640

## WADDING RANGE

249 / 266 WOOL MIX 70/30

266 WOOL MIX 70/30

249



249

### PROPERTIES:

### APPLICATION:

### PROCESSING:

□ / 80% PES, 20% R-PES / 47 g/m<sup>2</sup> / 150 cm x 25 m

Very lightweight, sew-in wadding made from synthetic fibres.

For patchwork, quilting and for warm clothing, such as jackets and coats.  
Suitable for all fabrics.

Sew in by hand or with the sewing machine.  
Quilt spacing: 15 cm



266 WOOL MIX 70/30

### PROPERTIES:

### APPLICATION:

### PROCESSING:

□ natural / 70% WO, 30% PES / 100 g/m<sup>2</sup> / 150 cm x 22 m

Lightweight, soft sew-in wadding made from 70% wool and 30% polyester.

For light quilted jackets, and also for blankets and quilts.  
Suitable for all fabrics.

Sew in by hand or with the sewing machine. When you process wool fleece, fibre migration cannot be completely excluded. TIP: Iron a lightweight interlining onto the wrong side of the fabric.

Quilt spacing: 15 cm





# WADDING RANGE

268 BAMBOO MIX 50/50 / 272 THERMOLAM

36

268 BAMBOO MIX 50/50



272 THERMOLAM



268 BAMBOO MIX 50/50

□ natural / 47% CV (bamboo), 46% CO, 7% PP Scrim / 135 g/m<sup>2</sup> / 244 cm x 22 m / SB: Queen Size 220 cm x 270 cm (90" x 108"), Crib Size 114 cm x 152 cm (45" x 60"), Twin Size 183 cm x 228 cm (72" x 90")

PROPERTIES:

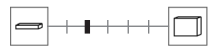
Medium-weight, very soft, stitchable wadding made of 47% viscose (bamboo) and 46% cotton.

APPLICATION:

Duvets, quilts and wall hangings, and light clothing such as jackets and coats. Suitable for all fabrics.

PROCESSING:

Sew in by hand or with the sewing machine. Before processing, soak wadding in hot water for 20 minutes. Carefully squeeze out the water and leave to dry lying flat.



272 THERMOLAM

□ / 100% PES / 180 g/m<sup>2</sup> / 90 cm x 25 m / SB: 90 cm x 1 m

PROPERTIES:

Heavyweight, soft and compact sew-in wadding made from synthetic fibres and featuring good heat and cold insulation properties.

APPLICATION:

For pot holders and pot mats (use at least two layers), chair and sofa covers, patchwork and quilting. Can also be used as an ironing pad (use at least two layers) and as an ironing cover for the protection of sensitive fabrics (pearls, sequins). Suitable for all fabrics.

PROCESSING:

Sew in by hand or with the sewing machine. Quilt spacing: 15 cm



# WADDING RANGE

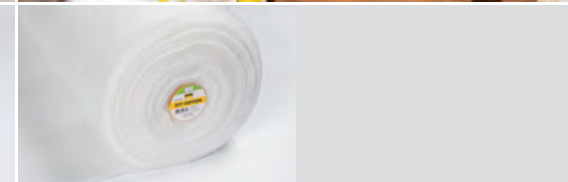
276 NATURAL COTTON WHITE / 277 COTTON

37

276 NATURAL COTTON WHITE



277 COTTON



276 NATURAL COTTON  
WHITE

□ / 93% CO, 7% PP Scrim / 135 g/m<sup>2</sup> / 244 cm x 27 m / SB: Queen Size 220 cm x 270 cm (90" x 108")

PROPERTIES:

Lightweight, soft, sew-in wadding made from bleached cotton with scrim.

APPLICATION:

Patchwork and quilting as well as warm garments such as jackets and coats especially with light coloured outer fabrics. Suitable for all, especially light coloured fabrics.

PROCESSING:

Sew in by hand or with the sewing machine. Before processing, soak wadding in hot water for 20 minutes. Carefully squeeze out the water and leave to dry lying flat. Quilt spacing: 10-20 cm



277 COTTON

□ off-white / 100% CO / 80 g/m<sup>2</sup> / 150 cm x 25 m

PROPERTIES:

Lightweight, soft sew-in wadding made from pure cotton.

APPLICATION:

For patchwork, quilting and for warm clothing, such as jackets and coats. Suitable for all fabrics.

PROCESSING:

Sew in by hand or with the sewing machine. Before processing, soak wadding in hot water for 20 minutes. Carefully squeeze out the water and leave to dry lying flat. Quilt spacing: 10-20 cm





# WADDING RANGE

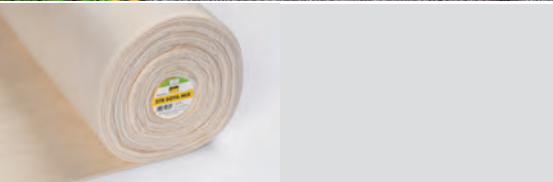
278 SOYA MIX / 279 COTTON MIX 80/20

38

## 278 SOYA MIX



## 279 COTTON MIX 80/20



## 278 SOYA MIX

### PROPERTIES:

### APPLICATION:

### PROCESSING:

□ natural / 47% CV (soy), 46% CO, 7% PP Scrim / 135 g/m<sup>2</sup> / 152 cm x 15 m  
Medium-weight, very soft, stitchable wadding made of 47% viscose (soy) and 46% cotton.  
For duvets, quilts and tapestries as well as light clothing, such as jackets and coats.  
Suitable for all fabrics.

Sew in by hand or with the sewing machine. Before processing, soak wadding in hot water for 20 minutes. Carefully squeeze out the water and leave to dry lying flat.  
Quilt spacing: 10-20 cm



## 279 COTTON MIX 80/20

### PROPERTIES:

### APPLICATION:

### PROCESSING:

□ natural / 80% CO, 13% PES, 7% PP Scrim / 170 g/m<sup>2</sup> / 244 cm x 22 m,  
XL: 300 cm x 22 m / SB: Queen Size 220 cm x 270 cm (90" x 108"), Crib Size  
114 cm x 152 cm (45" x 60"), Twin Size 183 cm x 228 cm (72" x 90")

Mediumweight, very soft sew-in wadding made from 80% cotton and 13% polyester.  
For duvets, quilts and tapestries as well as light clothing, such as jackets and coats.  
Suitable for all fabrics.

Sew in by hand or with the sewing machine. Before processing, soak wadding in hot water for 20 minutes. Carefully squeeze out the water and leave to dry lying flat.  
Quilt spacing: 10-20 cm



# WADDING RANGE

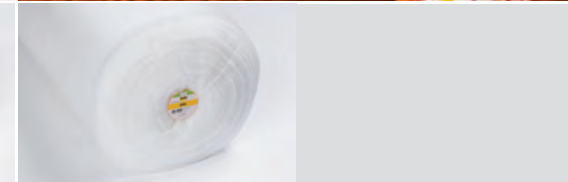
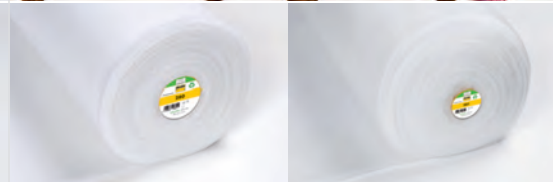
280, 281 / 295

39

## 281



## 295



## 280, 281

### PROPERTIES:

### APPLICATION:

### PROCESSING:

□ / 75% PES, 25% R-PES / 80 g/m<sup>2</sup> / 90 cm x 15 m, 150 cm x 25 m  
Lightweight, lofty sew-in wadding made from synthetic fibres.  
For duvets, quilts and tapestries as well as light clothing, such as jackets and coats.  
Suitable for all fabrics.

Tack the wrong side of the fabric to the wadding and sew it in by hand or with the sewing machine.  
Quilt spacing: 15 cm



## 295

### PROPERTIES:

### APPLICATION:

### PROCESSING:

□ / 75% PES, 25% R-PES / 100 g/m<sup>2</sup> / 150 cm x 25 m  
Lightweight, soft and very lofty sew-in wadding made from synthetic fibres.

For patchwork and quilting with particularly voluminous effects, such as bedspreads and tapestries.  
Suitable for all fabrics.

Tack the wrong side of the fabric to the wadding and sew it in by hand or with the sewing machine.  
Quilt spacing: 15 cm





# WADDING RANGE

P 120 / P 140 / P 250

40



P 120 + P 250









P 120 / P 140 / P 250

□ / P 120: 90% R-PES, 10% PES / P 140, P 250: 66% R-PES, 34% PES  
/ P 120: 120 g/m<sup>2</sup> / P 140: 140 g/m<sup>2</sup> / P 250: 250 g/m<sup>2</sup>  
/ P 120: 150 cm x 25 m, P 120 SB: 250 cm x 300 cm (XXL) / P 140: 150 cm x 20 m  
/ P 250 SB: 150 cm x 200 cm (XXL)

PROPERTIES: P 120: Mediumweight, flame-retardant, sew-in wadding, made from synthetic fibres.  
P 140: Mediumweight, voluminous, flame-retardant sew-in wadding, made from synthetic fibres.  
P 250: Heavyweight, highly voluminous, flame-retardant sew-in wadding, made from synthetic fibres.

APPLICATION: For patchwork and quilting, duvets, baby rugs, upholstery as well as warm and functional clothing such as jackets, coats or protective clothing.  
Suitable for all fabrics.

PROCESSING: Sew in by hand or with the sewing machine.  
Quilt spacing: 15 cm

P 120 (XXL)  + + + + +   
P 140  + + + + +   
P 250 (XXL)  + + + + + 



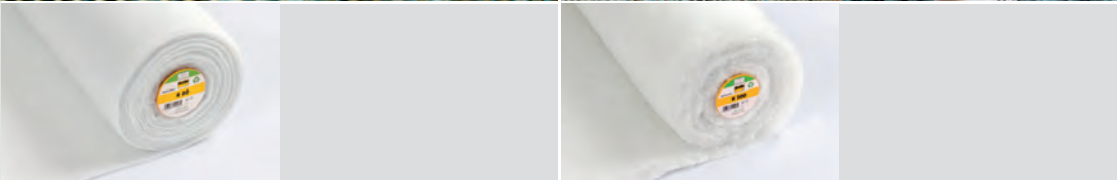
# WADDING RANGE

R 80 / R 200

41



R 80

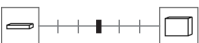


R 80

□ / 100% R-PES / 80 g/m<sup>2</sup> / 155 cm x 22 m  
PROPERTIES: Lightweight, bulky sew-in wadding with a soft handle made from 100% recycled polyester fibres.

APPLICATION: For quilting, patchwork, bags and garment applications.  
Suitable for all fabrics.

PROCESSING: Sew in by hand or with the sewing machine.  
Quilt spacing: 15 cm



R 200

□ / 100% R-PES / 200 g/m<sup>2</sup> / 155 cm x 10 m  
PROPERTIES: Heavy, extremely bulky, sew-in wadding with a soft handle made from 100% recycled polyester fibres.

APPLICATION: For quilting, patchwork and garment applications.  
Suitable for all fabrics.

PROCESSING: Sew in by hand or with the sewing machine.  
Quilt spacing: 15 cm





# WADDING RANGE

H 630 / H 640

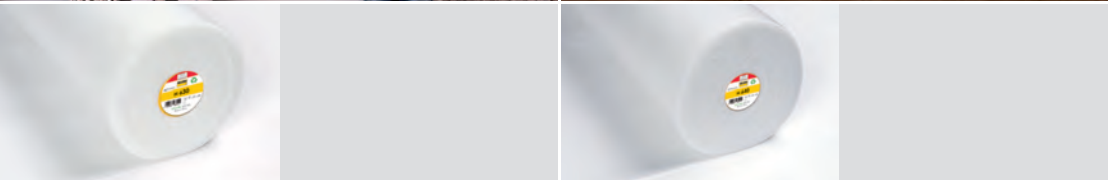
42

43

H 630



H 640



H 630

PROPERTIES:

APPLICATION:

PROCESSING:

□ / 30% R-PES, 70% PES / 86 g/m<sup>2</sup> / 90 cm x 30 m

Lightweight, low-migration fusible wadding made from synthetic fibres.

For patchwork and quilting, topstitching, voluminous tie-backs and warm clothing, such as jackets and coats.

Suitable for light- to mediumweight fabrics.

Press the iron on step by step for about 15 seconds, using a damp cloth. Do not push.



15 s



H 640

PROPERTIES:

APPLICATION:

PROCESSING:

□ / 30% R-PES, 70% PES / 132 g/m<sup>2</sup> / 90 cm x 30 m

Mediumweight, soft fusible wadding made from synthetic fibres.

For topstitching and quilting, for three-dimensional work such as voluminous bows or borders, and warm clothing such as jackets and coats.

Suitable for light- to mediumweight fabrics.

Press the iron on step by step for about 15 seconds, using a damp cloth. Do not push.



15 s



vlieseline®



## SPECIAL PRODUCTS

IRON CLEANER / EMBROIDERY SET / IRON ON PRESSING CLOTH



# SPECIAL PRODUCTS

IRON CLEANER / EMBROIDERY SET

44

IRON CLEANER



EMBROIDERY SET



BÜGELEISENREINIGER  
IRON CLEANER

**PROPERTIES:** Cleaning stick for the soleplate of the iron. It melts when it comes into contact with the hot surface.

**APPLICATION:** Wipe off scorch, starch and burn stains.

**PROCESSING:**

1. Heat the iron using the wool setting on the iron.
2. Hold the iron horizontally, because the iron cleaner melts.
3. Run the stick back and forth over the soleplate, allow it to act for a few minutes and then wipe the soleplate clean with a cotton cloth.

**WARNING:** Do not inhale fumes.



STICK-SET  
EMBROIDERY SET

**CONTENT:** 5 embroidery stabilizer sheets: Filmoplast H 54, Solufix, Solufleece, Stich-n-Tear and Fuse-n-Tear as well as a brochure with detailed instructions, application recommendations and instructions to follow.

**APPLICATION:** Attractive starter set for finding the right embroidery aid for your own embroidery project.

# SPECIAL PRODUCTS

IRON ON PRESSING CLOTH

45

IRON ON PRESSING CLOTH



IRON ON BÜGELTUCH  
IRON ON PRESSING CLOTH

**PROPERTIES:** Cloth for protecting the outer fabric when ironing on fusible interlinings. IRON ON offers an optimal moisture level for damp-fusible interlinings to ensure that excessive moisture is not used when ironing on the interlining. Ideal for preventing glossy spots on heat-sensitive or dark fabrics.

**APPLICATION:** IRON ON becomes transparent when moistened, making it easier to position interlinings for fusing. That's how IRON ON protects your fabric for ideal results when fusing interlinings.

**PROCESSING:**

1. Dampen IRON ON and wring it out.
2. Place IRON ON on the fusible interlining while damp and iron the interlining according to the specified fusing instructions.

□ / 70% CV, 30% Cellulose / SB: (2x) 60 cm x 44 cm





INTERLININGS FOR YOUR INDIVIDUAL GARMENT NEEDS

Although interlinings are concealed between lining and outer fabric they are an important and essential part of your garment construction and make a significant contribution to shape, fit and wearability.

Our Vlieseline® interlinings provide the necessary stability for all garment components ensuring the fabric does not distort or tear, and ensuring the long term durability of the final garment. By using Vlieseline®, you will produce a long-lasting piece of clothing. Thanks to the easy and accurate processing of our interlinings, even working with difficult fabrics becomes really easy.

The selection of the right interlining depends on several factors, such as the fabrics to be processed, the kind of the piece of clothing to be reinforced, the desired handle or the purpose which the piece of clothing is to be used for. Thanks to our wide portfolio, we can offer you a suitable interlining for any application.

All our products are washable and dry-cleanable.

THE RIGHT CUT MAKES ALL THE DIFFERENCE

The straight grain of the part cut to size should always be in parallel with the outer edge of the interlining. If the interlining is not cut to size in lengthwise direction, this may produce tension – depending on the fabric selected – and the interlining may come off.

For pocket openings, we generally recommend fusing the interlining lengthwise to the opening as otherwise the opening may become distorted over time.

HOW DO OUTER FABRICS HAVE TO BE TREATED BEFORE BEING PROCESSED WITH VLIESELINE®?

In order to reduce the possibility of shrinkage during construction we recommend either washing outer fabrics before use or ironing thoroughly with a steam iron. Thereafter process your outer fabric with the selected interlining as normal.

HOW DO YOU TREAT NATURAL FIBRE INTERLININGS BEFORE PROCESSING?

As we do not apply a special finish in order to preserve the natural properties of waddings made from natural fibres, we recommend washing the interlining before use to anticipate the shrinkage that may occur during processing and care (usually 3 -7%). Please do not wring the interlining. Slightly squeezing the water out will be sufficient. Then allow the interlining to dry by laying it out flat.

WHAT IS IMPORTANT REGARDING THE IRON I USE?

To achieve an optimum result, we recommend using an iron with a continuous soleplate as it ensures the uniform distribution of heat. If you use a steam iron, the steam holes may not evenly distribute the temperature and the pressure with the risk of the interlining not properly bonding with the outer fabric. This can result in the formation of blisters and a wavy surface, which in turn may cause the interlining to come off in some places.

FUSING WITH A DAMP CLOTH

Position the interlining with its coated side facing down on the wrong side of the outer fabric. Then place a damp, but not wet, ironing cloth, such as IRON ON, over your interlining and fuse it section by section with your iron. To ensure the reliable fusing of your edges, you can press on the iron in an overlapping manner.

DRY FUSING

Position the interlining with its coated side facing down on the wrong side of the outer fabric. Slide your iron over your work. To ensure the reliable fusing of your edges, you can press on the iron in an overlapping manner.

After fusing, always allow your work to cool down completely. The cooling time may be about 15-30 minutes depending on the outer fabric.

Always precisely observe the fusing instructions related to the specific products as their adhesives need a certain time for bonding properly with the outer fabric. Should you notice poor bonding after fusing, first extend the fusing time before increasing the temperature.

Complete fusing is recommended for parts made from loosely woven fabrics.

APPLICATION	LIGHTWEIGHT FABRICS	MEDIUMWEIGHT FABRICS	HEAVYWEIGHT FABRICS
BLOUSE/ DRESS:			
Collar/ Cuff, Facing, Button placket	G 785, H 180	B 710, G 710, H 200	B 700, G 700
Neckhole/ armhole	Bias Tape, Seam Tape Flexible	Bias Tape, Seam Tape Flexible	Bias Tape, Seam Tape Flexible
BLAZER/ COAT:			
Front, Collar, Packet flap, Welt pocket	G 405, H 410	G 405, G 740, G 770, H 410	G 740, G 770, H 410
Slit	G 405, H 410, Edgefix, Seam Tape Flexible	G 405, G 740, G 770, H 410, Edgefix, Seam Tape Flexible	G 740, G 770, H 410, Edgefix, Seam Tape Flexible
Hem, Sleeve hem, Jersey hem	Perfect Hem, Stretchfix T30	Perfect Hem, Stretchfix T30	Perfect Hem, Stretchfix T30
SKIRT/ TROUSERS:			
Straight waistband	Edgefix	Waist-Shaper, Edgefix	Waist-Shaper, Edgefix
Shaped waistband, Belt loop	G 405, H 410	G 405, G 770, H 410	G 740, G 770, H 410
Hem, Jersey hem	Seam Tape Flexible, Perfect Hem, Stretchfix T30	Seam Tape Flexible, Perfect Hem, Wundaweb®, Stretchfix T30, Bondaweb®	Seam Tape Flexible, Perfect Hem, Wundaweb®, Stretchfix T30, Bondaweb®
CREATIVE:			
Embroidery	Fuse-N-Tear, Solufix, Solufleece, Stitch-N-Tear	Fuse-N-Tear, Solufix, Solufleece, Stitch-N-Tear	Fuse-N-Tear, Solufix, Solufleece, Stitch-N-Tear
Freehand embroidery	Solufix	Solufix	Solufix
Appliqués	Stretchfix, Bondaweb®	Stretchfix, Bondaweb®	Stretchfix, Bondaweb®
FABRICS:			
Elastic fabrics	Framilastic, H 609, Stretchfix, Seam Tape Flexible	Framilastic, G 770, H 609, Stretchfix, Seam Tape Flexible	Framilastic, G 770, H 609, Stretchfix, Seam Tape Flexible
Leather	G 785, LE 420	LE 420	LE 420
Non-fusible, heat-sensitive fabrics	L 11	M 12	S 13

BEFORE STARTING YOUR PROJECT WE RECOMMEND FUSING A SAMPLE TO TEST HANDLE AND BOND. AFTER IRONING LAY THE FUSED PARTS FLAT AND ALLOW TO COOL FOR 20-30 MINUTES BEFORE HANDLING.

You can find detailed processing instructions for our products on our website and in the leaflets supplied with the products.